



Montana Teen Driver Education and Training

Module 3.5

Vehicle Control in Limited Spaces





What are limited spaces?



Permission Granted by Montanapictures.net



Limited spaces



Questions

- Why do I need this skill?
- What do all these skills have in common?
- What are the risks when doing one of these maneuvers?
- What do I need to know to minimize the risks for each of these tasks?



Common Elements of Maneuvering in Limited Spaces

- **Approach** with precision.
- **Signal** to communicate.
- **Search** to know what's around you.



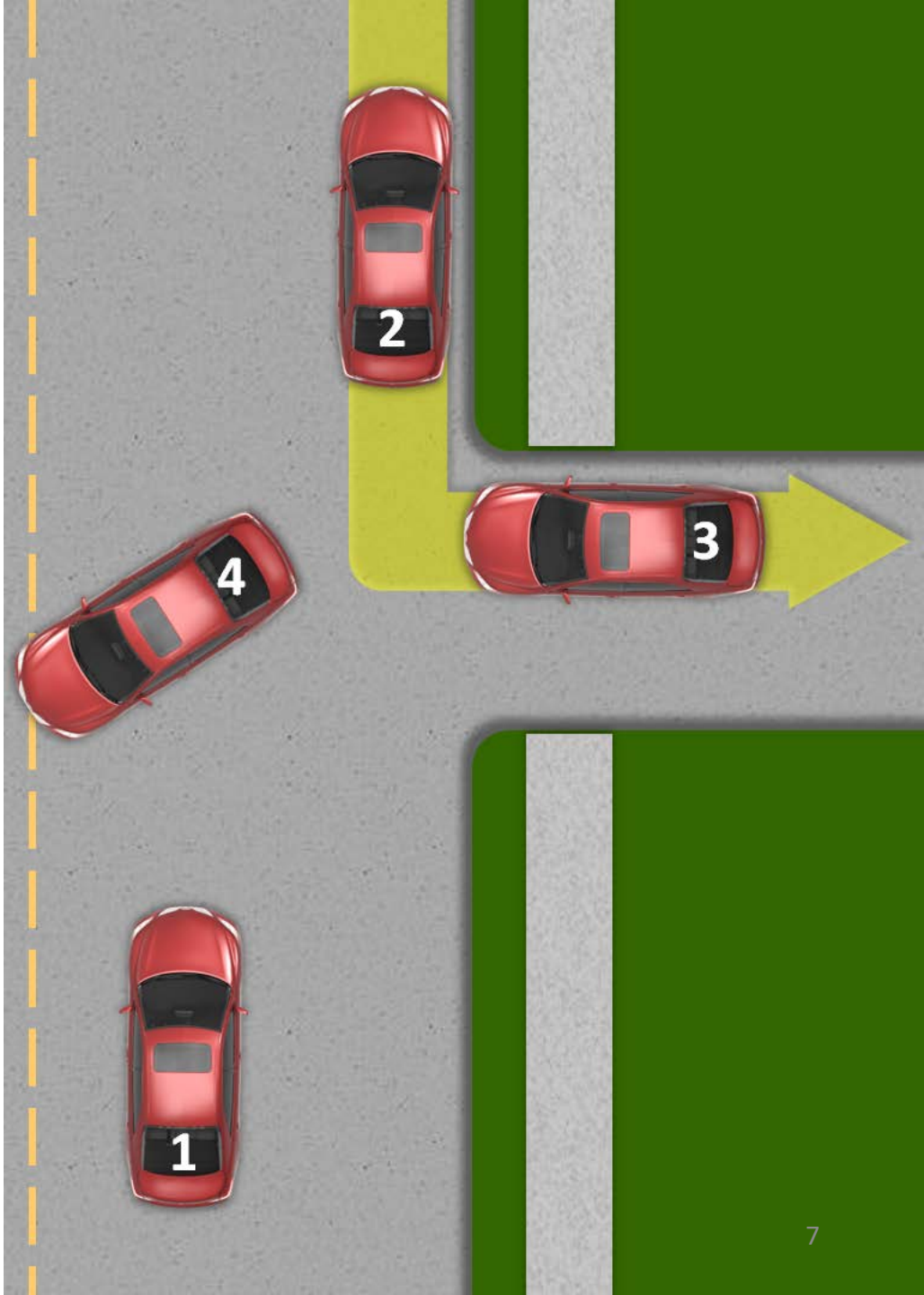
Turnabouts

- Right Alley (driveway) or Two Point Turnabout
- Left Alley (driveway) Turnabout
- Y-Turn
- U-Turn
 - Mid-block
 - At an intersection

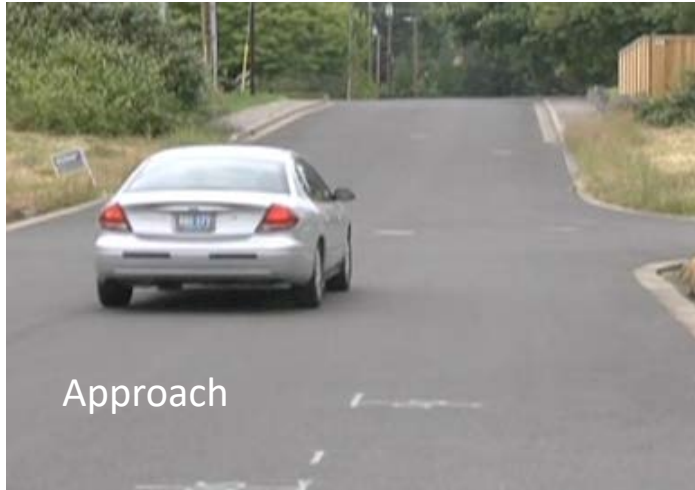


Right Alley, Driveway or Two-Point Turnabout

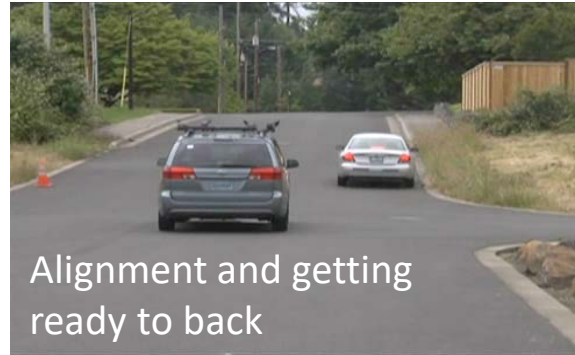
1. Pull to the curb.
2. Get ready to back.
3. Turn wheel from top down when pivot point lines up with edge of driveway.
4. Back beyond the pedestrian zone-stop.
5. Search and complete a precision left turn.



How does it look from the street?



Approach



Alignment and getting ready to back



Backing and turning



Back past pedestrian zone



Precision left turn



1

Student Activity 1

Identify the correct sequence for a right alley turnabout.



2



3



4



5



Left Alley (Driveway) Turn-Around



PLAY VIDEO (2:59)



Y-Turns

Three-Point or Y-Turns

Y-Turns – Dead-End Turnaround



PLAY VIDEO (1:35)

Y-Turnabouts in the Woods



PLAY VIDEO (1:13)



U-Turns

- At an intersection
- Mid-block

Illegal U-Turns

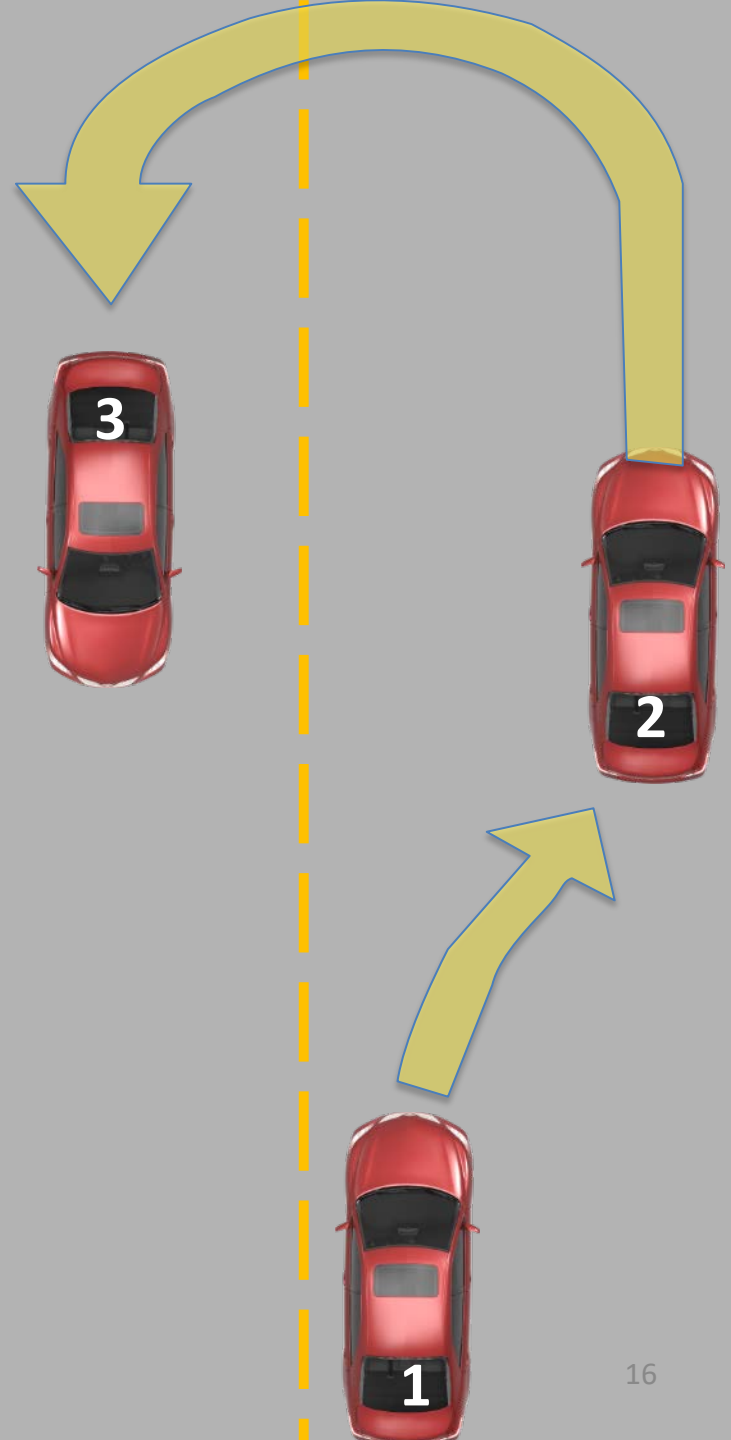
- At traffic-light controlled intersections unless sign permits it
- On a highway, in city limits, mid-block
- On a highway where you cannot be seen by another driver approaching from any direction for a distance of:
 - 500 feet within city limits
 - 1000 feet outside city limits
- Anywhere a sign prohibits it



U-Turn

Choose a legal location, or dead end roadway

1. Search (500 – 1000 feet), check mirrors and blind spot, signal.
2. Move to right side limit, stop, search again and yield, signal, check blind spot.
3. Target , turn fully left, straighten when transition peg aligns with new target to get on target.





Intersection U-Turn





U
TURN
PERMITTED



IM
A





Parking Maneuvers

- Forward Angle Parking
- Forward Perpendicular Parking
- Back-in Perpendicular Parking
- Pulling to the Curb
- Parallel Parking on a Street



Student Activity 2

- Materials
 - Pencil, paper, Montana Driver Manual or Adapted Illustrated Driver Manual*
- Work in groups of two.
- As a group list as many places as you can where parking is NOT permitted.

* Visit <http://opi.mt.gov/DriverEd>

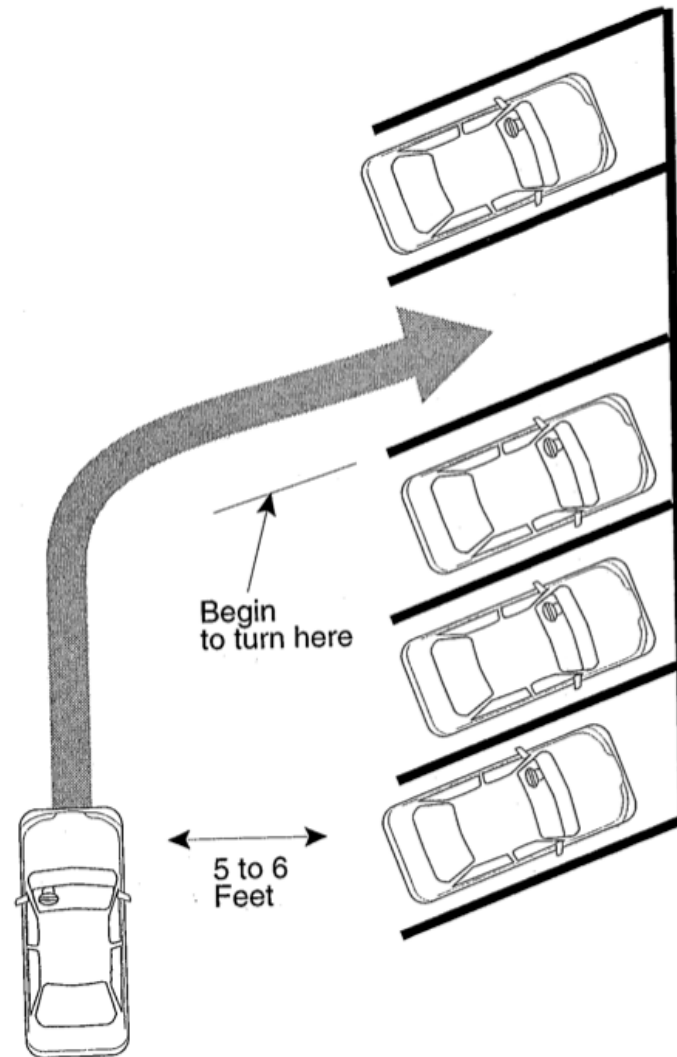


Common Elements

Each parking maneuver requires that you use:

- the same approach - signal, apply the brake, approach slowly
- a side position 3 feet away
- an inching speed
- a 45° angle
- the rear pivot point
- a target in the center of your space

Forward Angle Parking



Forward Angle Parking



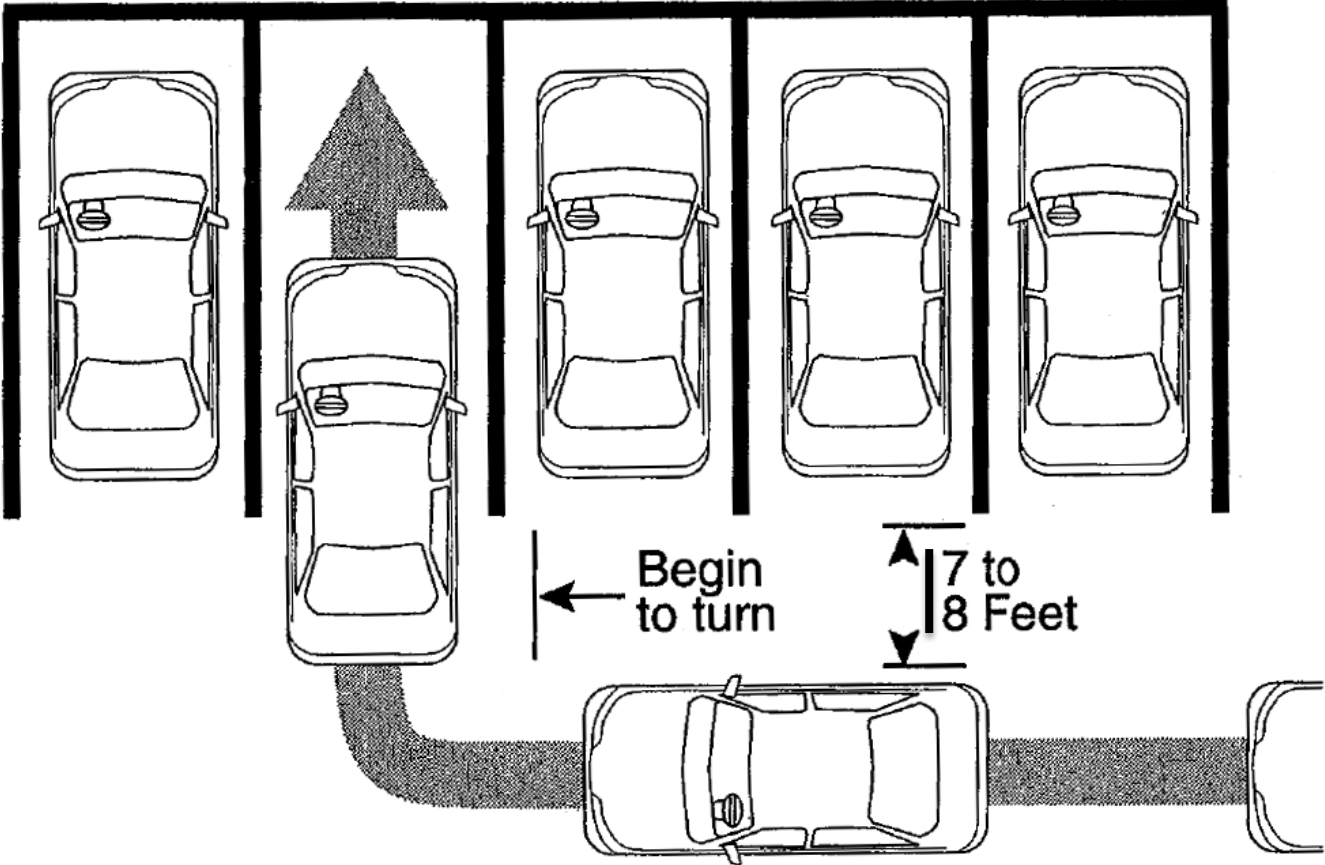
PLAY VIDEO (1:27)



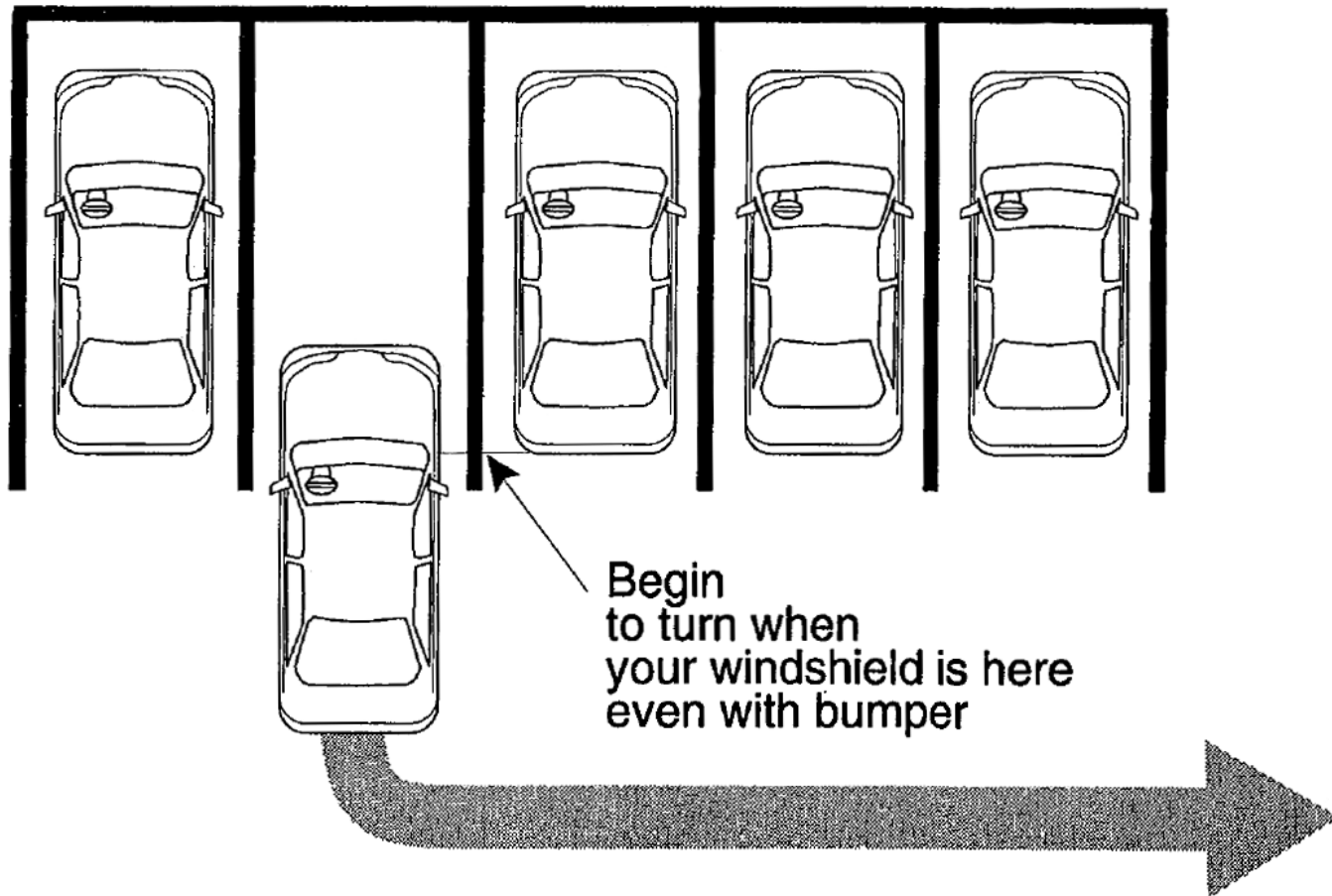
Backing a vehicle is a high-risk maneuver!

Your view around the vehicle is blocked. When you have a choice, move forward. If you have to back up, use risk prevention behaviors.

Forward Perpendicular Parking



Forward Perpendicular Un-Parking





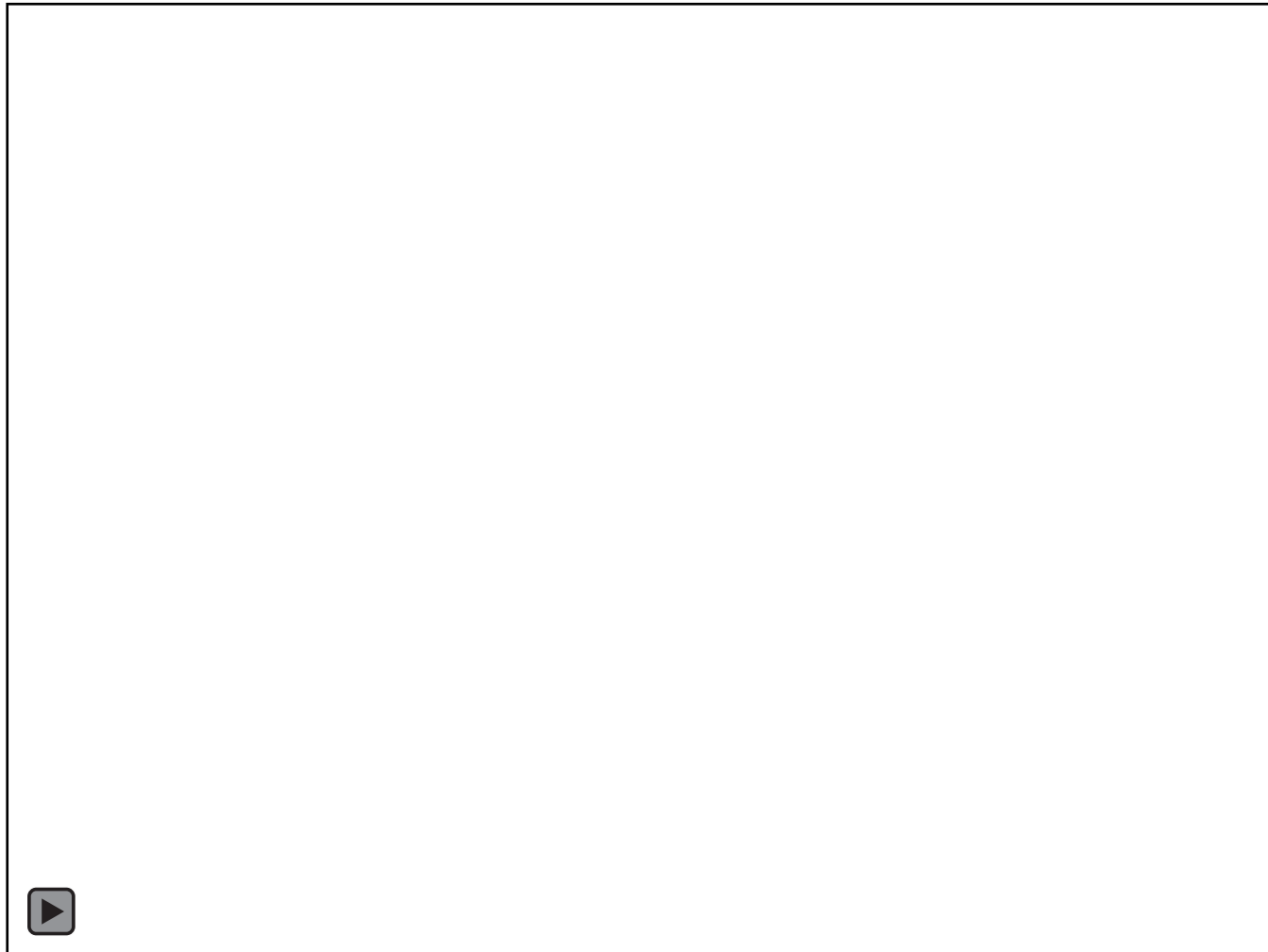
Back-In Perpendicular Parking



PLAY VIDEO (2:01)



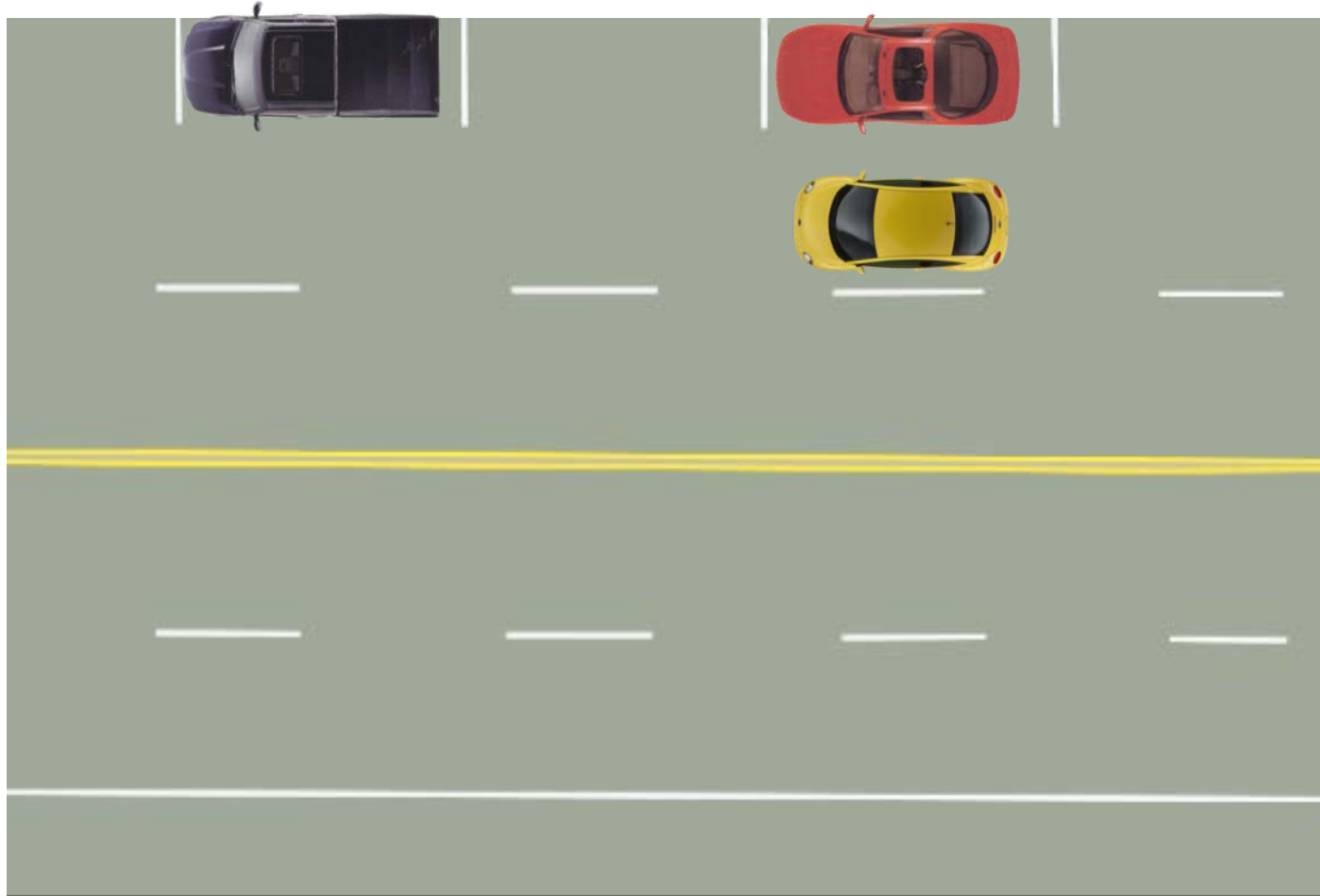
Parallel Parking



PLAY VIDEO (2:58)



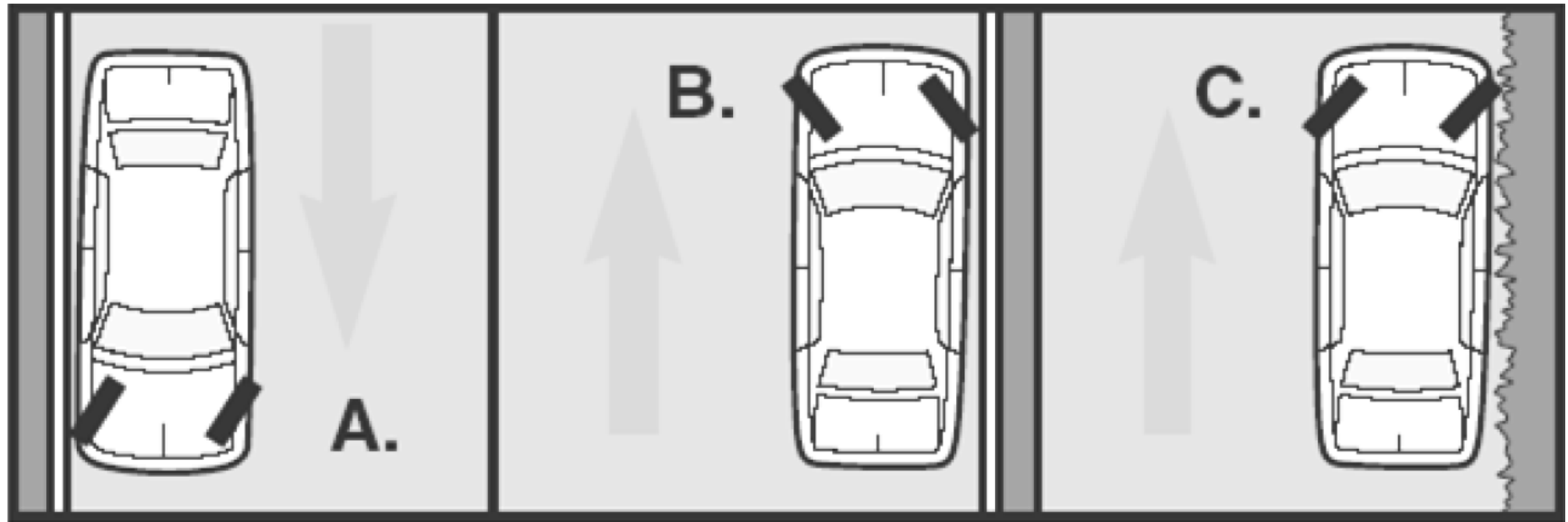
Student Activity 3



Hill Parking

- Downhill with a curb
- Downhill without a curb
- Uphill with a curb
- Uphill without a curb

Parking on a Hill



Downhill

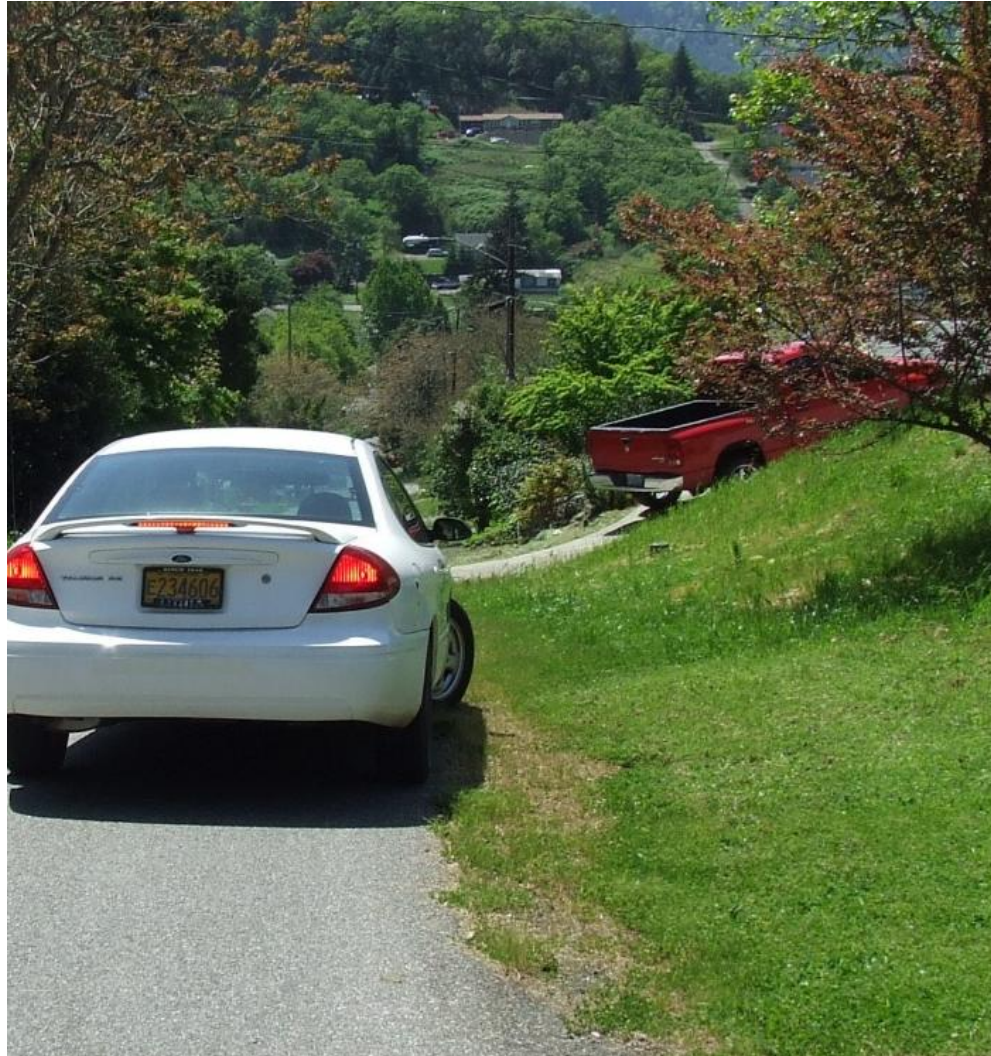
Uphill

Uphill (no curb)

Downhill with a Curb



Downhill without a Curb





Uphill with a Curb



Uphill Without a Curb



Secure Your Car



1. Right foot on brake
2. Set parking brake
3. Shift to “Park”
4. Turn off accessories
5. Turn off engine
6. Check for traffic before exiting
7. Lock up



Montana Driver Education and Training Standards and Benchmarks

1. Laws and Highway System

- 1.1. know the laws outlined in the Montana Driver's manual;
- 1.2. understand the laws outlined in the Montana Driver's Manual; and
- 1.3. consistently demonstrate knowledge and understanding by responsible adherence to highway transportation system traffic laws and control devices.

2. Responsibility

- 2.1. recognize the importance of making safe and responsible decisions for owning and operating a motor vehicle;
- 2.2. demonstrate the ability to make appropriate decisions while operating a motor vehicle;
- 2.3. consistently display respect for other users of the highway transportation system; and
- 2.4. develop positive habits and attitudes for responsible driving.

3. Visual Skills

- 3.1. know proper visual skills for operating a motor vehicle;
- 3.2. communicate and explain proper visual skills for operating a motor vehicle;
- 3.3. demonstrate the use of proper visual skills for operating a motor vehicle; and
- 3.4. develop habits and attitudes with regard to proper visual skills.

4. Vehicle Control

- 4.1. demonstrate smooth, safe and efficient operation of a motor vehicle; and
- 4.2. develop positive habits and attitudes relative to safe, efficient and smooth vehicle operation.

5. Communication

- 5.1. consistently communicate driving intentions (i.e., use of lights, vehicle position, and personal signals);
- 5.2. adjust driver behavior based on observation of the highway transportation system and other roadway users;
- 5.3. adjust communication (i.e., use of lights, vehicle position, and personal signals) based on observation of the highway transportation system and other users; and
- 5.4. develop positive habits and attitudes for effective communication.

6. Risk Management

- 6.1. understand driver risk-management principles;
- 6.2. demonstrate driver risk-management strategies; and
- 6.3. develop positive habits and attitudes for effective driver risk-management.

7. Lifelong Learning

- 7.1. identify and use a range of learning strategies required to acquire or retain knowledge, positive driving habits, and driving skills for lifelong learning;
- 7.2. establish learning goals that are based on an understanding of one's own current and future learning needs; and
- 7.3. demonstrate knowledge and ability to make informed decisions required for positive driving habits, effective performance, and adaptation to change.

8. Driving Experience

- 8.1. acquire at least the minimum number of BTW hours over at least the minimum number of days, as required by law, with a Montana-approved driver education teacher; and
- 8.2. acquire additional behind-the-wheel driving experience with a parent or guardian's assistance in a variety of driving situations (i.e., night, adverse weather, gravel road, etc.).